

TA6 Series

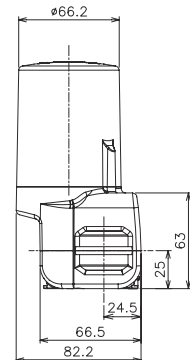
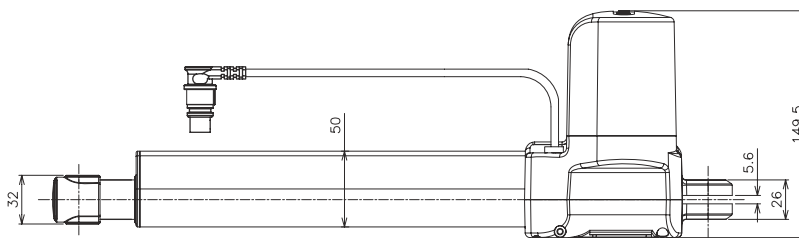
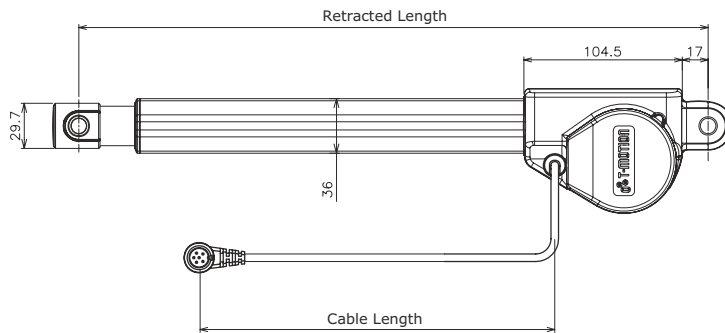
○ Comfort-motion ○ Care-motion ○ Auto-motion

Feature

- 24V DC motor
- Rated Load 6000N for push
- Extremely low noise
- V0 fire resistance material
- Most compact design in nowadays market
- Durable and reliable gear box design
- Robust design for spindle assembly
- Limit switch built-in
- Safety Nut available
- IP52 as standard
- External Limit Switch protection available
- CE and RoHS complied



Appendix						
CODE	Rated Load		SELF LOCKING KG (PUSH)	Typical Current at Rated Load (A)	Typical Speed	
	PUSH (KG)	PULL (KG)			No Load (32VDC) mm/s	Rated Load (24VDC) mm/s
Standard Motor (2600RPM)						
C	500	400	250	3.6	7.2	3.9
D	600	400	400	3.5	5.5	2.9
F	250	250	100	3.4	14.4	8.9
G	200	200	100	3.8	19.2	10.8
H	100	100	50	3.4	28.8	17.6
J	350	350	350	3.8	9.6	5.7
Fast Motor(3400RPM)						
L	600	400	400	4.4	7.3	3.9
N	250	250	100	4.2	19.2	11.8
O	200	200	100	4.6	25.6	13.8
P	100	100	50	4.2	38.4	23.4
Q	350	350	350	4.6	12.8	7.6
T	500	400	250	4.2	9.7	5.1
Long Motor(3800RPM)						
X	600	400	400	4.4	7.8	5.2



Actuators

W: www.techome.com.au

E: info@techome.com.au

T: (07) 3117 9888

Every effort is made to ensure the accuracy of this publication, however it is intended as a guide only and specifications or information may change at any time without notice.



TA6 Ordering Key:

Version: I

REV.I	T	A	6	-	X	X	-	X	X	X	-	X	X	X	-	X	X	X	-	X	X	X	
Voltage																							
12V					1																		
24V					2																		
36V					3																		
Load and speed																							
See Appendix																							
Stroke																							
Retracted length																							
Stroke+163mm (For front attachment 1, 2, 5, 6)																							
Stroke+180mm (For front attachment 3, 4,B,C)																							
Stroke+175mm (For front attachment 7, 8)																							
Rear attachment																							
Plastic, slot 5.2mm, hole 10.2mm																							1
Front attachment																							
Punched hole on the tube with plastic cover on, width 32mm, hole 10.2mm																							1
Punched hole on the tube with plastic cover on, width 32mm, hole 12.2mm																							2
Plastic attachment, width 30mm, with slot 8.2mm, hole 10.2mm(Recommended for push under 400KG & pull under 250kg application)																							3
Plastic attachment, width 30mm, with slot 8.2mm, hole 12.2mm(Recommended for push under 400KG & pull under 250kg application)																							4
Punched hole on the tube, width 26mm, hole 10.2mm																							5
Punched hole on the tube, width 26mm, hole 12.2mm																							6
Short casting attachment, width 26mm, with slot 6.2mm, hole 10.2mm																							7
Short casting attachment, width 26mm, with slot 6.2mm, hole 12.2mm																							8
Long casting attachment, width 30mm, with slot 8.2mm, hole 10.2mm																							B
Long casting attachment, width 30mm, with slot 8.2mm, hole 12.2mm																							C
Customized																							A
Color																							
Black																							1
Special functions for spindle sub-assembly																							
Without																							0
Safety nut																							1
Standard push only																							2
Safety nut and standard push only																							3
Freewheeling push only (retracted length will be extended by 15mm)																							4
Safety nut and freewheeling push only (retracted length will be extended by 15mm)																							5
Functions for limit switches																							
Two switches at the retracted/extended positions to cut current																							1
Two switches at the retracted/extended positions to cut current with the third one in between to send signal																							2
Two switches at the retracted/extended positions to send signal																							3
Two switches at the retracted/extended positions and the third one in between to send signal																							4
Customized																							A
Plug																							
Standard 6pin plug																							1
Tinned leads																							2
Customized																							A
Cable length																							
Straight, 500mm																							1
Straight, 750mm																							2
Straight, 1000mm																							3
Straight, 1250mm																							4
Straight, 1500mm																							5
Straight, 2000mm																							6
Coiled, 200mm																							7
Coiled, 400mm																							8
Customized																							A

Version	Date	Description
I	2010/6/16	Plug re-organization; separate into # 3, #4, #B, #C

Printed: Nov.2011