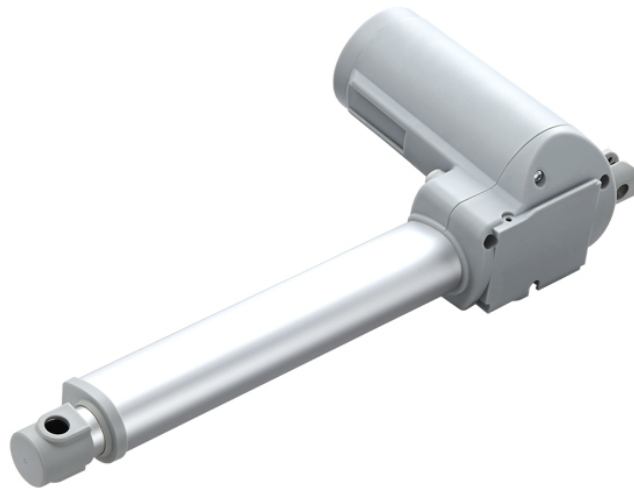


TA31

Series



Product Segments

Care Motion

TA31 Series

The TA31 is a simplification of our medical grade linear actuators. The TA31's simplicity provides an economical, yet high quality, option for medical applications such as medical beds, medical chairs, or home care options.

General Features

Voltage of motor	24V DC, 24V DC(PTC)
Maximum load	6,000N in push
Maximum load	3,000N in pull
Maximum speed at full load	13.4mm/s (with 2000N in a push or pull condition)
Stroke	25~450mm
Minimum installation dimension	Stroke + 157mm
Color	Black or grey
IP Rating	Up to IP66W
Operational temperature range	+5°C~+45°C
Options	Safety nut, Hall sensor(s)

An economic solution with compact installation dimension

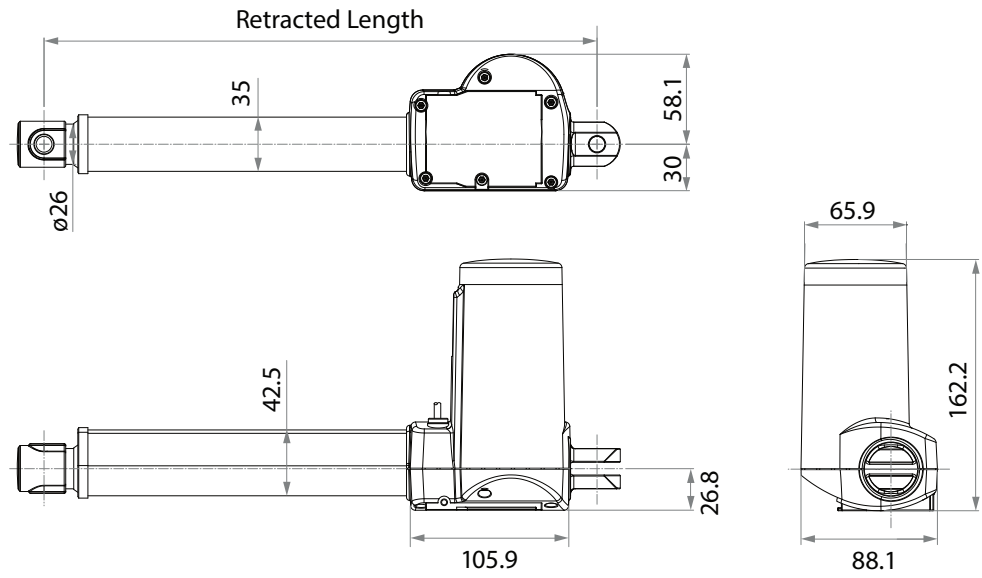


MOTION AND AUTOMATION

P: 07 3297 9797 A: 33 Perrin Drive, Underwood, QLD, 4119, Australia E: info@techhome.com.au W: www.techhome.com.au

Drawing

Standard Dimensions
(mm)



Load and Speed

CODE	Load (N)		Self Locking Force (N)	Typical Current with Load (A)		Typical Speed (mm/s)	
	Push	Pull		No Load 32V DC	With Load 24V DC	No Load 32V DC	With Load 24V DC
Motor Speed (3800RPM, Duty cycle 10%)							
B	6000	3000	6000	0.8	4.3	6.0	3.3
C	5000	3000	3000	0.8	4.3	8.1	4.4
D	3500	3000	3500	0.8	4.3	12.1	6.5
E	2000	2000	1350	0.8	4.0	24.2	13.4

Note

- 1 With a 12V motor, the current is approximately twice the current measured in 24V; speed will be similar for both voltages.
- 2 Self locking force: Tested average value when working with TecHome control system.
- 3 Current and speed: Tested average value when stretching in push direction.